

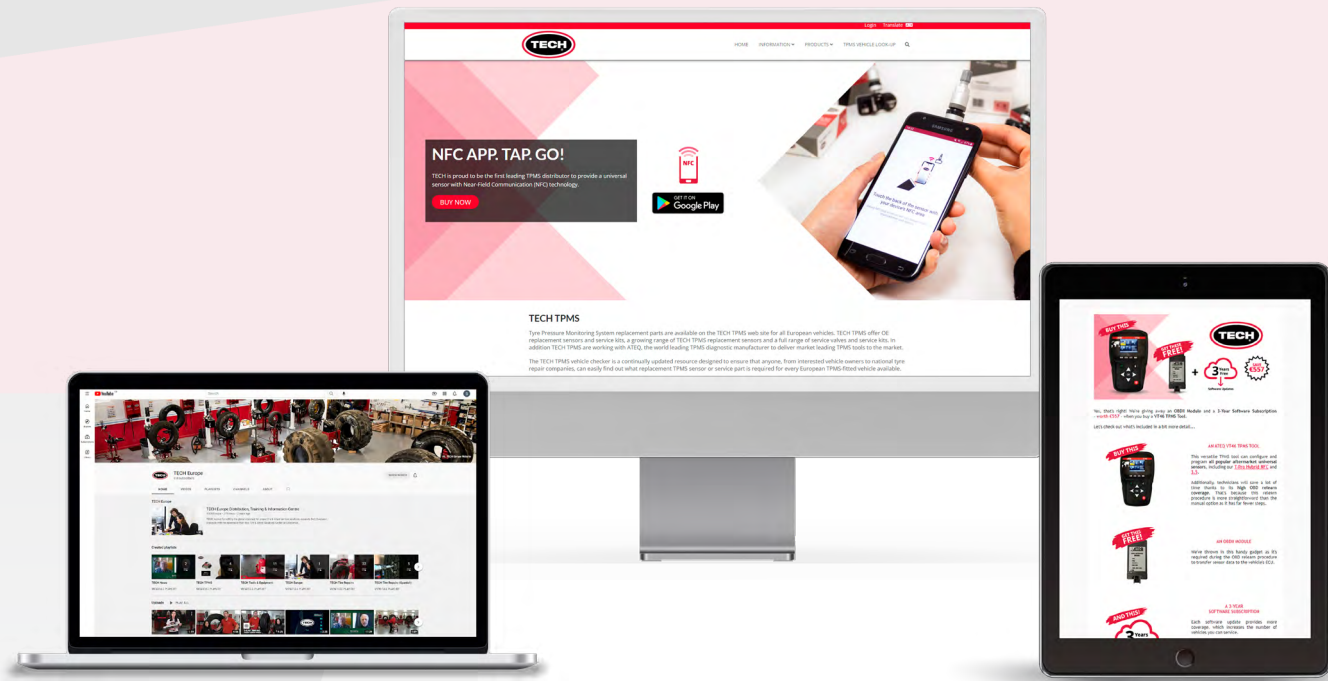
The Global Tire & Wheel Authority



www.techtpms.com

Complete TPMS Range





Online Shop & Support

On our website, visitors will find answers to the most asked questions surrounding TPMS and a [downloads](#) page, including how-to guides and product comparison charts.

Unlock Exclusive TPMS Info Plus Much More with Just a Login

Besides up-to-date coverage of our TPMS product range, users can take advantage of step-by-step relearn procedures for countless vehicles. This industry-leading data will be a blessing to anyone fitting a new sensor and help ensure the vehicle's TPMS is in good working order.

A 24/7 Service

Our online shop allows users to place an order whenever is convenient for them. Users will also gain access to (account specific) live pricing and their purchase history.

Let's Stay Connected

Follow our social media channels and be among the first to hear about the latest business and product news.

Are you looking to expand your knowledge of TPMS? Make sure you subscribe to the TECH Europe YouTube channel for regular tutorials.



Universal Sensors

The NFC-Enabled Universal Sensor



What Sets this Sensor Apart?

Users can configure and program this sensor with their smartphones.

This solution is perfect for DIYers, wheel assemblers and companies looking to capitalise on TPMS business opportunities.

What is NFC?

NFC is a short-range wireless technology that allows compatible devices to communicate. Its most common use on a smartphone is making quick and easy payments with Apple Pay or Google Pay.



TPMS SENSORS

NFC Benefits & App Features

Superfast Configuration

The app configures Hybrid NFC sensors in a tap, outperforming TPMS tools.*

Two Ways to Configure

Create a new ID and use any TPMS tool to relearn a vehicle. Alternatively, manually enter an existing OE sensor ID and skip the relearn process altogether.

No Potential for Error

Users can rest assured they have configured the correct sensor thanks to the short-range transmission of NFC.

Free to Download & Update

Say goodbye to subscription fees and manual updates. The app updates itself, so users do not have to! ** As a result, the latest vehicle coverage will always be at one's fingertips.

Silver Clamp-In: [72-21-953](#)

Black Clamp-In: [72-21-955](#)

Snap-In: [72-21-954](#)

Graphite Clamp-In: [72-21-956](#)



Besides NFC, the T-Pro Hybrid NFC includes the same features as the Hybrid 3.5 (on page 3).

*Available for NFC-enabled Android phones and the iPhone 7 or newer with a minimum of iOS 15.
**Mobile data or a Wi-Fi connection is required.



- Configurable in 1-3 seconds, as a high percentage of known vehicles protocols are stored on the sensor
- Programmable with new protocols added as they become available, future-proofing stock
- Compatible with leading diagnostic tools, including those manufactured by ATEQ
- Designed for an optimal fit with OE and aftermarket wheels
- Powerful Maxell battery and the latest NXP chip
- 3-year sensor warranty*

Configurable & Programmable Universal Sensor



Silver Clamp-In: [72-21-945](#)
Black Clamp-In: [72-21-947](#)

Snap-In: [72-21-946](#)
Graphite Clamp-In: [72-21-951](#)

TESLA BLE SENSOR



The T-Pro Hybrid BLE is a direct replacement for the Sysgration BLE (Bluetooth Low Energy) sensor used by Tesla vehicles. This aftermarket solution also employs BLE to alert the ECU when tire pressure drops and is pre-programmed, enabling technicians to skip the programming step.

Coverage:

- Tesla Model 3 (Oct 2020+)
- Tesla Model S (Jun 2021+)
- Tesla Model X (Oct 2021+)
- Tesla Model Y (Oct 2020+)



Silver Clamp-In: [72-21-987](#) **Black Clamp-In:** [72-21-989](#)
Graphite Clamp-In: [72-21-990](#)



OE Replacement Sensors

- Cost-effective solution to replace Original Equipment (OE) sensors
- No programming required - fully functional following a TPMS relearn procedure
- LOS, WAL, PAL, SAL and WASP auto-location technologies
- Designed for an optimal fit with OE and aftermarket wheels
- Powerful Maxell battery and the latest NXP chip
- 3-year sensor warranty*

Valve Options:

- Silver Clamp-In
- Snap-In
- Black Clamp-In
- Graphite Clamp-In



Hamaton Hybrid Lite Sensor



The Lite version of the standard Hamaton Hybrid 3.5 is a cost-effective, blank, purely programmable sensor, meaning protocols need programming to the sensor with a compatible diagnostic tool.



Silver Clamp-In: [72-21-969](#)
Black Clamp-In: [72-21-983](#)

Snap-In: [72-21-982](#)
Graphite Clamp-In: [72-21-991](#)

Valve Options for TECH Sensors

The T-Pro family of sensors have four valve stem options: our most popular aftermarket Snap-In and three Clamp-In valves designed to complement alloy wheels.



Silver Clamp-In:
[72-20-138](#)



Snap-In:
[72-20-401](#)



Black Clamp-In:
[72-20-139](#)



Graphite Clamp-In:
[72-20-491](#)



Diagnostic Tools

Standard Features

- Read and activate 100% of OE and aftermarket sensors
- Manually enter IDs and copy a set of wheels
- Retrieve IDs from the ECU*
- Unlock the ECU*
- Manual relearn procedures
- ATEQ's Live Sensor platform (updates sensor information in real-time)
- ATEQ's Sync-ID technology (increases OBDII relearn coverage to over 90%)*
- Remote Key Entry (RKE) test
- A sensor part number directory
- Easy-to-use icon-driven navigation and a comprehensive language selector

Hamaton and ATEQ Diagnostic Tools | Key Differences

	Hamaton	ATEQ
Configure/Program	EU-Pro Hybrid and T-Pro Hybrid Sensors	All Popular Universal Sensors
Multi-programming	EU-Pro Hybrid and T-Pro Hybrid Sensors	All Popular Universal Sensors
Free Software Subscription	5 Years	1 Year (VT37 & VT67) 3 Years (VT47 & VT57)
Warranty	2 Years	1 Year (VT37, VT47 & VT57) 2 Years (VT67)

The Hamaton H57** can be upgraded to configure/program other universal sensors.
See page 9 for more information.

Additional Features Per Diagnostic Tool

ATEQ VT67

- 8" colour touchscreen
- Reads BLE Sensors
- Update via Wi-Fi
- Customer management
 - Capture images of vehicle parts
 - Email TPMS reports
 - Storage: 12GB
- TPMS diagnostics
 - Retrieve DTCs
 - ID Match (compare sensor IDs to the ECU)
- Tire management
 - Record DOT codes (date and place of tire manufacture)
 - Change tire pressure placard value
 - Measure tire tread depth***
- Vehicle databases: Australasia, Europe, Japan and North America
- OBDII port locations
- OBDII connector included



P/N: 72-21-611

*Excludes the ATEQ VT37.
**If users upgrade the sensor coverage, the subscription period will revert to the remaining time offered with the equivalent ATEQ tool.
***Tire Tread Depth Gauge sold separately

Additional Features Per Diagnostic Tool

ATEQ VT57 & Hamaton H57 BLE

- 4.3" colour touchscreen
- Reads BLE Sensors
- Update via Wi-Fi
- Customer management
 - Store up to 800 service records
 - Retrieve DTCs
- TPMS diagnostics
 - Retrieve DTCs
- Tire management
 - Record DOT codes (date and place of tire manufacture)
 - Change tire pressure placard value
 - Measure tire tread depth*
- Vehicle databases: Australasia, Europe, Japan, Korea and North America
- OBDII port locations
- OBDII module and connector included



P/N: 72-20-742



P/N: 72-20-741



P/N: 72-20-740

ATEQ VT47 BLE

- 2.8" colour display
- Reads BLE Sensors
- Tire management
 - Change tire pressure placard value
- Vehicle databases: Europe, Eurasia and North America
- OBDII connector included



Hamaton H47

- 2.8" colour display
- Tire management
 - Change tire pressure placard value
- Vehicle databases: Europe, Eurasia and North America
- OBDII connector included

P/N: 72-20-680



ATEQ VT37

- 2.8" colour display
- Vehicle databases: Australasia, Europe, Eurasia and North America

P/N: 72-21-604

***Tire Tread Depth Gauge sold separately.



Commercial Vehicle TPMS



Hamaton EU-Pro Truck 1.0 Valve-Mounted Sensor (VMS)

The simple and easy to use Truck 1.0 TPMS solution fits seamlessly into your existing tire changing processes, and is compatible with both OE and aftermarket Truck TPMS valves.

- Mandatory for new M1, M2, M3, N1, N2, N3, O3, O4 EU vehicle registrations from July 2024
- European database of trucks, trailers, and buses, with new protocols automatically added
- Compatible with ATEQ's VT Truck 2.0, and H56/57, VT56/57 tools with a truck upgrade
- 24-month warranty or 100,000-km, whichever comes first.
- Cutting-edge battery and the latest NXP chip
- 433MHz frequency required for EU TPMS systems



P/N: 72-22-070



P/N: 72-22-937

Hamaton EU-Pro Truck 1.0 Band-Mounted Sensor (BMS)

The EU-Pro Truck 1.0 band mounted sensor (BMS) is the same innovative sensor technology as the valve mounted option but with an adjustable, universal fitment band mounting solution for easy installation and maintenance without valves.

- Universal fitment without any modification, additional tools or components
- Features band loop mounts and hook and loop fastenings for fast and efficient fitment
- Compatible with ATEQ's VT Truck 2.0, and VT56/57/67 and H56/57 tools with a truck upgrade
- 24-month warranty or 100,000-kilometres, whichever comes first
- Cutting-edge battery and the latest NXP chip
- 433MHz frequency required for commercial vehicle TPMS systems

Compatible Hamaton Valves



P/N: 72-21-406

P/N: 72-21-407

P/N: 72-21-408

P/N: 72-21-409

P/N: 72-21-410

P/N: 72-21-411

Compatible Alcoa Valves



P/N: 6-430

P/N: 6-431

P/N: 6-432

P/N: 6-433

P/N: 6-434



PN: 72-21-634

ATEQ VT Truck 2.0 with OBD Power Converter

The ATEQ VT Truck 2.0 offers a range of functions specifically designed for the maintenance of trucks, buses, coaches, trailers, and light trucks.

- 2.8" colour display
- Program aftermarket sensors designed for heavy-duty commercial vehicles
- Global database for trucks, buses, coaches, trailers, and light trucks
- Easily read sensors, even in twin wheels, up to 22 wheels
- Tire management
 - Measure tire tread depth*
- OBDII capability for on-board diagnostics
- WiFi & real time updates, powered by Live Sensor™
- One-year software subscription

*Tire Tread Depth Gauge sold separately.

Truck Upgrades | Hamaton H56/57 & ATEQ VT56/57/67

Diagnostic tool users can purchase a truck upgrade, enabling them to read and diagnose TPMS systems on commercial vehicles.

These upgrades allow users to service both passenger and commercial vehicles without investing in another tool. Upgrading your tool unlocks a separate menu dedicated to commercial vehicles TPMS maintenance.

Includes:

- Software Upgrade
- OBD Power Converter



H57: 72-22-739 | VT57: 72-22-738
H56: 72-22-737 | VT56: 72-22-736



Tire Tread Depth Gauge

This ergonomic tool accessory quickly captures three precise measurements (inner, centre and outer) of up to seven tires per vehicle.

Besides improved road safety, identifying a worn tire enables garages to upsell a replacement.

For the following diagnostic tools: VT67, VT57 & H57.

P/N: [72-20-632](#)



Tool Kit

Our tool kit and carry case is an essential piece of equipment for garages, workshops and tire bays, as it contains all the tools required to service valves.

Compatible with every valve on the market, this tool kit reduces TPMS servicing times by ensuring you have the correct tool available and lowers the risk of damaged service parts caused by varying torque settings among valves and service kits.

Contents:

- Calibrated torque tool, including:
 - o 7mm, 11mm and 12mm hex sockets
 - o 10, 15 and 20 Torx bits
- [Valve core torque tool](#)
- [Grommet removal tool](#)
- [T6 Torx screwdriver](#)

P/N: [72-20-711](#)



Starter Kit Pro

The Starter Kit Pro contains a selection of the most popular replacement parts, which cover 99% of European direct TPMS-enabled vehicles.

With 52 valves and 12 service kits (for OE and aftermarket sensors), the Starter Kit Pro alleviates the worry of not having the correct replacement parts to hand.

For extra convenience, the contents are available in individual boxes of 10.

P/N: [72-20-569](#)



BUNDLE OFFERS*

Our fantastic bundle deals combine the H47/H57 TPMS diagnostic tools with our configurable and programmable Hybrid 3.5 sensors.

Bundle options include:

- Hamaton H47 or Hamaton H57 TPMS diagnostic tool
- 8, 16 or 24 Hybrid 3.5 sensors

You can mix and match the valve stems. Choose from Silver Clamp-In, Black Clamp-In, Graphite Clamp-In and Snap-In.**

**Please specify which valve stems you want in the extra information box at checkout, or the quantity will be split equally between Silver Clamp-In and Snap-In.



*Available while stocks last.

Universal Sensor Upgrade

Increase the universal sensor coverage of your Hamaton H57 diagnostic tool to include sensors from the following brands: ALCAR Sensor, ALLIGATOR Sens.it, BH SENS IntelliSens, VDO REDI-Sensor and SCHRADER EZ-sensor.

If users upgrade the sensor coverage, the subscription period will revert to the remaining time offered with the equivalent ATEQ tool.

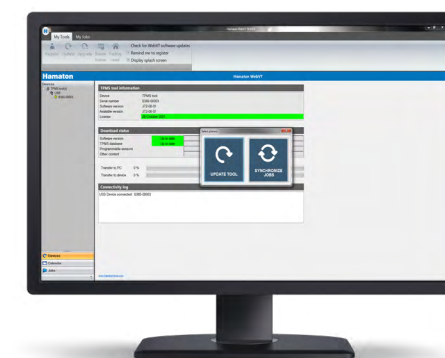
Software Updates

Having a valid software subscription and keeping diagnostic tools updated is essential. Software updates provide new features and increased coverage meaning garages can service more vehicles.

If your software licence has expired or is ending soon, contact us to discuss your options.

Install WebVT to download the latest software update. VT67, VT57 and H57 owners can perform subsequent updates via Wi-Fi.

www.techtpms.com/webvt



UPGRADES & ADD-ONS



+32 14 423 103



techeurope@trc4r.com



www.techtpms.com

